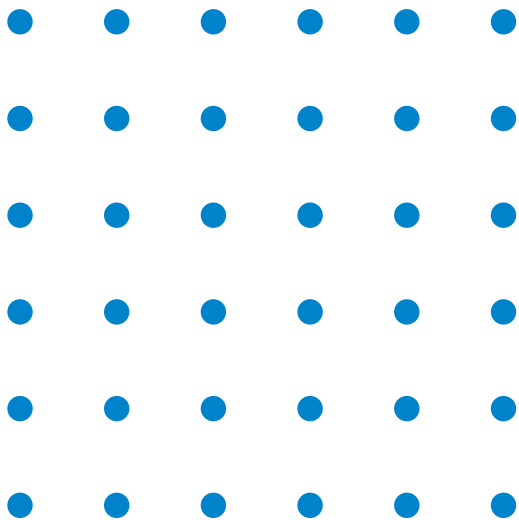


Industrial
Systems

Pioneers in industrial drive systems
and automation.



That's running

- Engineering
- Panel building
- Installation
- Commissioning
- Inspections
- 24/7 Service
- Training

That's running non-stop

Operational continuity, guaranteed.

TES Industrial Systems provides sustainable solutions for industrial drive systems and industrial automation. Your company's continuity is our number one focus. To guarantee that, we develop and produce sustainable drive systems and automation solutions that are used around the world in container cranes, industrial cranes, conveyor-belt systems, maritime installations, amusement parks and other industrial applications.

TES Industrial Systems. That's running!

That's running optimal

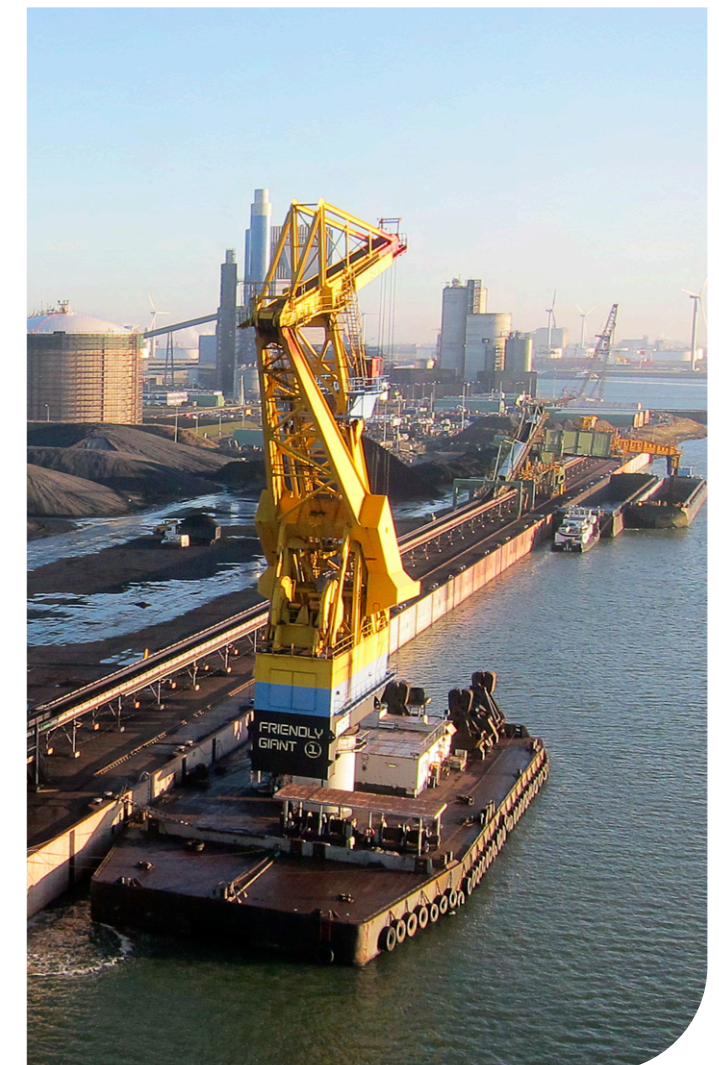
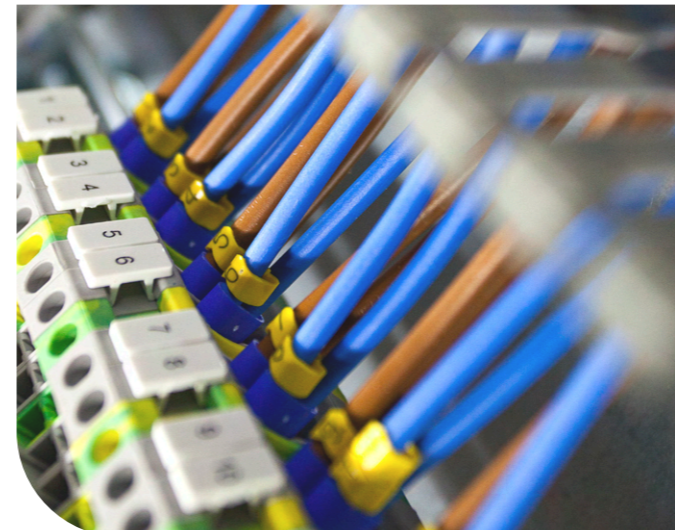
We understand that your goal is to keep your systems operating as productively as possible while avoiding unnecessary downtime. Our specialists in Oosterhout and Beverwijk, the Netherlands are there for you 24/7. We do everything we can to prevent unnecessary downtime and resolve any issues as quickly as possible. Our people are experts in their fields and are constantly planning ahead. We work closely with our clients to provide the best tailor-made solutions.

That's running transparent

Based on an initial design, we put together a project team. Our project leader keeps a close watch on things, reporting continually to the client while ensuring safety and making sure deadlines are met. **Success is guaranteed!** We strive for innovation while providing practical solutions. Our (semi-)hybrid drive systems bring sustainability to a whole new level. Good for your efficiency, better for the environment.

That's running efficient

TES Industrial Systems optimises its clients' return on investment. We work together with our clients to provide the most reliable solutions. Our strength lies in our team of allround, ambitious and innovative professionals. They offer expertise from many different fields and work together on practical, sustainable solutions to complex problems. That makes us effective and successful.





Engineering

After intensive sessions with our clients, the pre-engineering phase begins. We develop a plan for turnkey, tailor-made drive systems, electro-technical solutions and automation projects. After technical and budgetary approval, our engineering department works out the plan in detail. Our team is not just focused on one discipline in their work. This interdisciplinary approach enables us to stop problems before they happen.

Panel building

Based on innovative and detailed plans from our engineers, our technicians prepare high-quality, custom-made control panels. These are built to ensure the continuity of your operations. Our panel construction department is part of our total solution. Throughout the process, our engineering, panel construction, installation and commissioning teams work side by side.

Installation

Our motivated, energetic installation team gets straight to work. Throughout the project, they are always ready to adapt to any new developments. Since our technicians are completely familiar with the everyday conditions in which the systems will be running, they deliver exactly what you need and expect. They are also not afraid of working under tough conditions and are at your service, no matter where you are in the world.

Commissioning

We do not sell products, we sell solutions. The key to a good solution is that it completely lives up to the client's expectations. After installation, our commissioning department makes sure the installation performs exactly as planned. Our commissioner has developed the necessary software and knows the system inside and out. We only hand over the system when we are confident that it is 100% operational.

Inspections

To prevent unnecessary downtime, we provide periodic inspections of installations. Our service team conducts these inspections and resolves any problems right on the spot. Regular inspections performed by our service technicians and engineers ensure the continuity and safety of the installations and your employees.



24/7 Service

Unplanned downtime is a hassle and a waste of money. If an unexpected problem occurs, we get you back up and running quickly with a working solution. We are here to help, any time, any place: our worldwide service team is on standby 24/7!

Training

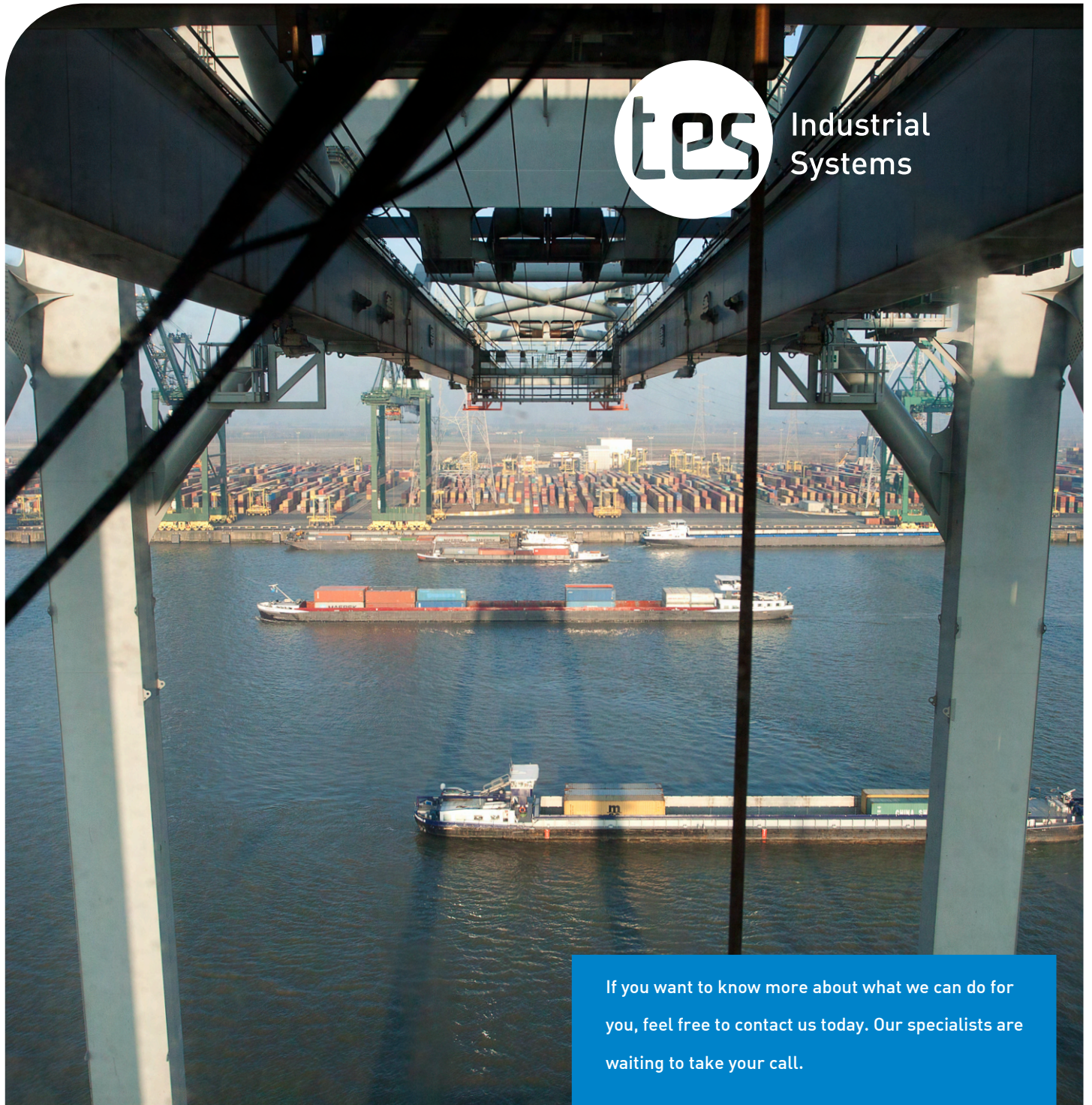
Our work does not stop with developing, installing and commissioning an installation. Our service specialists offer hands-on training for our clients' technical service employees.



Visit www.tesindus.nl for more information about TES Industrial Systems and interesting case studies.



Industrial
Systems



If you want to know more about what we can do for you, feel free to contact us today. Our specialists are waiting to take your call.

TES Industrial Systems

Oosterhout

Mechanisatieweg 2

Oosterhout

PO Box 113

4900 AC Oosterhout

The Netherlands

+31 (0)162 328 383

sales@tesindus.nl

TES Industrial Systems

Beverwijk

Breedbandweg 1

6E Kavel 37 - Aannemersweg

1951 MC Velsen-Noord

PO Box 55

1950 AB Velsen-Noord

The Netherlands

+31 (0)251 221 801

Beverwijk@tesindus.nl

www.tesindus.nl

Contact